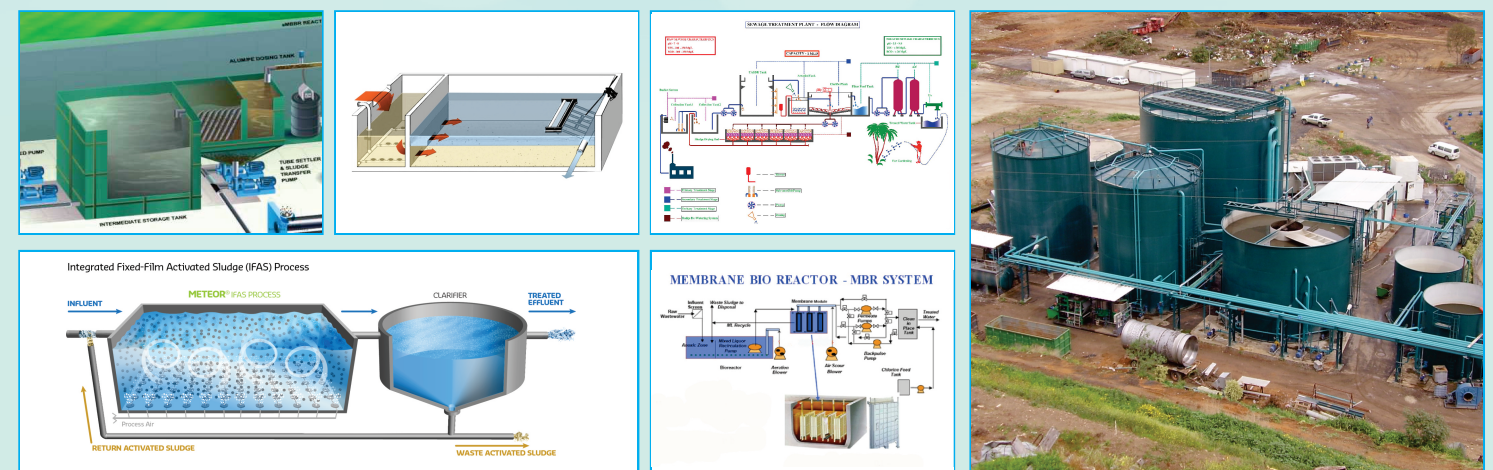




SIMPLIFYING WATER Sewage Treatment



Salient Features

- Simple design maximizes reliability and efficiency
- Singlelayer of activated Carbon
- Adsorption efficiency up to 85 to 90 %
- Low Pressure drop across the vessel
- FRP, MSRL, MSEP & SS Vessels are available.
- Manual, Semi-Automatic and Automatic features are provided
- Pre-assembled construction minimizes start-up time and installation costs
- Structural steel legs provide rigid support of vessel for safety
- Air scouring available for high flow pressure vessel.
- Proven design of internal distribution and collection system.

Benefits

- Efficient Chlorine, colour, organic matter and odour removal
- High surface area & EBCT
- Adsorption efficiency up to 90%
- Easy operation & maintenance
- Wide range in material of construction
- Economical way of production & design

Application

Drinking Water Treatment

- Organic matter, colour and odour removal
- Pre-treatment to Reverse Osmosis Plant
- Pre-treatment to Desalination Plant

River Water Treatment

- Organic matter removal

Ground Water Treatment

- Organic matter, colour and odour removal
- Pre-treatment to reverse Osmosis Plant
- Pre-treatment to Desalination Plant
- Waste Water Treatment Plant
- Organic matter, colour and odour removal

Quality Assurance



- Stringent quality checks at each stage.
- High quality components selection based on customized requirements.
- Components confirm to international certifications including NSF, FDA, ASME and CE.
- ISO 9001-2008 certified manufacturing facility.
- CNC manufacturing for consistency.
- Serial number control.

Valued Customers

- | | |
|--|--|
| <ul style="list-style-type: none"> • Air India • Airport Authority of India • All India Institute of Medical Sciences • All India Radio • Bihar Bhawan • CBSE • CISF • CPWD • Delhi Technological University • Tyagi Public School • Yamuna Sports Complex • TCIL • Tis Hazari Court • IARI • Indian Air Force • Indira Gandhi National Open University (IGNOU) • Indraprastha Gas Limited • Delhi Transport Corporation | <ul style="list-style-type: none"> • Delhi University • DSIIDC • GTB Hospital • Guru Nanak Public School • High Court • Jawaharlal Nehru University • Kendriya Vidyalaya • Krishi Bhawan • LRSI • MES • Ministry of Commerce • Ministry of Human Resource Development • Municipal Corporation of Delhi • National Security Guard • Northern Railway • Pandit Deen Dayal Upadhyaya Hospital • Prasar Bharati • PWD • Sewa Bhawan |
|--|--|

USA Office: 238, Charlotte Place, South Bound Brook, New Jersey, USA 08880

Branch India : 24 Kohat Enclave , Pitampura, New Delhi -110034

Ph.: +91 9871254708 | 9818158213 | 9650083608

Email: customer@aquawhizz.com, Web.: www.aquawhizz.com



Best Design



Minimum Footprint



Maximum Convenience



Easy Maintenance



Service Advantage



SIMPLIFYING WATER Sewage Treatment

M/s. Aqua Whizz is the distinguished Manufacturers and Exporters of technically advanced Water Treatment Equipment. We are pioneered in the manufacturing of Reverse Osmosis Plant, Industrial Waste Water Treatment Plant, Effluent recycling systems, Swimming Pool, Water Fountain, Bottling Plant, Solar ATM, Biological Sewage Treatment Plant, etc. Understanding the customers need and providing the right solution is the core of our excellence.

Aqua Whizz executed various types of projects viz., Water treatment systems, Waste water treatment and Recycling systems and Sewage treatment Plants for Pharmaceutical, Power, Chemical, Construction, IT and Commercial segments and our engineers are well trained for any type of trouble shooting operations.

Infrastructure

Knowing the fact that a well furnished infrastructure is the base of success for any company, we have developed a robust infrastructural base. Well furnished with the latest technological machines and techniques, our infrastructure assists us in providing high performance water treatment equipments.

Team

Backed by an enthusiastic team of professionals, we have achieved the steady success in the national and international market. Our dedicated team of experts always keeps itself abreast with the ever changing market requisites by attending various seminars and workshop. All their hard toils lead to provide excellent quality water treatment equipments.



SEQUENCING BATCH REACTORS (SBR) DECANTER

High-Performance SBR technology for municipal and industrial wastewater treatment.

Aqua Whizz SBR continuous inflow and treatment is accommodated through alternating react, settle, and decant sequences in SBR trains. Each train, through a typically operating cycle of three to five hours, provides all of the processes of activated sludge treatment in one basin.



Advantages of Aqua Whizz SBR

- Superior sludge settling performance due to bio-selector and aerobic/anoxic/anaerobic cyclic sequences
- Suppress filamentous bacteria thus lower potential for sludge bulking
- Enhanced nutrient removal (Denitrification and Bio-P) without chemicals or separate tanks
- Built-in equalization capacity preventing performance deterioration during surge conditions

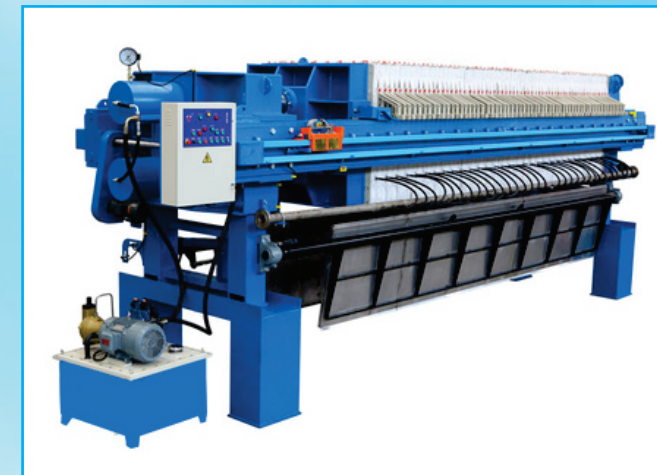
SEWERAGE TREATMENT & EFFLUENT TREATMENT PLANTS.

Technical Specification

Inlet and Outlet Parameters

Parameters	Units	Raw Sewage	Secondary Treated Sewage	Tertiary Treated Sewage
pH	unitless	6.5 – 8.5	6.5 – 8.5	6.5 – 8.5
Biochemical Oxygen Demand(BOD ₅)	mg/L	250 – 400 mg/L	< 30	< 10
Chemical Oxygen Demand(COD)	mg/L	400 - 700	< 250	< 100
Total Suspended Solids (TSS)	mg/L	200- 450	< 50	< 10
Oil and Grease	mg/L	20 – 40	< 10	< 2
Coliforms	Nos/100ml	10 ⁶ – 10 ⁷	< 100	< 100

FILTER PRESS



We bring-forth a wide array of Filter Press Machine, which is designed for the separation of solid and liquid. Offered machine is widely used for industrial filtration application by using pressure feeding method. Furthermore, it is developed by using latest technology and premium quality materials to offer maximum filtration efficiency and longer service life. Clients can get any variant of this Filter Press Machine from us at the best market price.

Features:

- Less operating cost
- Easy installation
- Easy to operate and maintain
- Longer service life

Industrial applications:

- Textile Process Effluent
- Sewage treatment plant
- Water Jet Loom
- Electroplating industry
- Tannery
- Food processing and Dairy
- Metal processing
- Automobile service station
- Yarn Dyeing Industry

MEMBRANE DIFFUSER



Fine pore flexible membrane diffusers provide operational flexibility with maximum oxygen transfer efficiency for aeration tank.

Typical efficiency of a full floor coverage diffused aeration system in clean water is 2%/ft submergence or 6.6%/m submergence. When converted to mass transfer into process or dirty water, it is typically closer to about half of those figures. Manufacturers of fine bubble systems have supported claims that the type, number and size of "pores" have a great effect on efficiency of a diffused aeration system.

The Aqua Whizz disc diffuser is a fine pore flexible membrane diffusers that provide operational flexibility with maximum oxygen transfer efficiency in aeration system. Aqua Whizz diffusers employ a 3/4 inch diameter PT (male) threaded connection for ease of installation/maintenance and universal application. Alternate materials of constructions are available for special applications.

constructions are available for special applications.

Aqua Whizz disc diffuser units are available with premium quality EPDM membranes. Multiple perforation patterns are available to optimize system performance. The flexible membrane diffusers incorporate an external check valve design to prevent intrusion of liquid or solids into the diffuser or air piping under normal on/off operating conditions.

ACTIVATED CARBON FILTERS

TECHNICAL SPECIFICATION

Flow	: 1M3/Hr. - 400 M3/Hr.
Filtration Velocity	: 12 to 18 M3/Hr./M2
EBCT**	: 2 to 30 Minutes
Diameter (Vertical Vessel)	: 0.225 Mts. - 4.0 Mts.
Length (Horizontal Vessel)	: 3.00 Mts. - 11.0 Mts.
MOC	: FRP / Mid Steel / Stainless Steel Coating / lining Epoxy / FRP / Rubber Lined
Chlorine , Colour, Odour removal	: 85 – 90 %
Design Code	: ASME / IS
Design Pressure	: Up to 10 Bar
Working Pressure	: 1.1 to 3.5 Bar
Clear Pressure Drop	: 0.3 bar
Top distribution system	: bell mouth
Bottom distribution system	: Strainer plate or Header & laterals.
** EBCT	: Effective Bed Contact time

